



WWW.B-TEK.COM

B-TEK SCALES, LLC 1510 METRIC AVE. SW CANTON, OH 44706
TOLL FREE: 800.266.8900 FAX: 330.471.8909



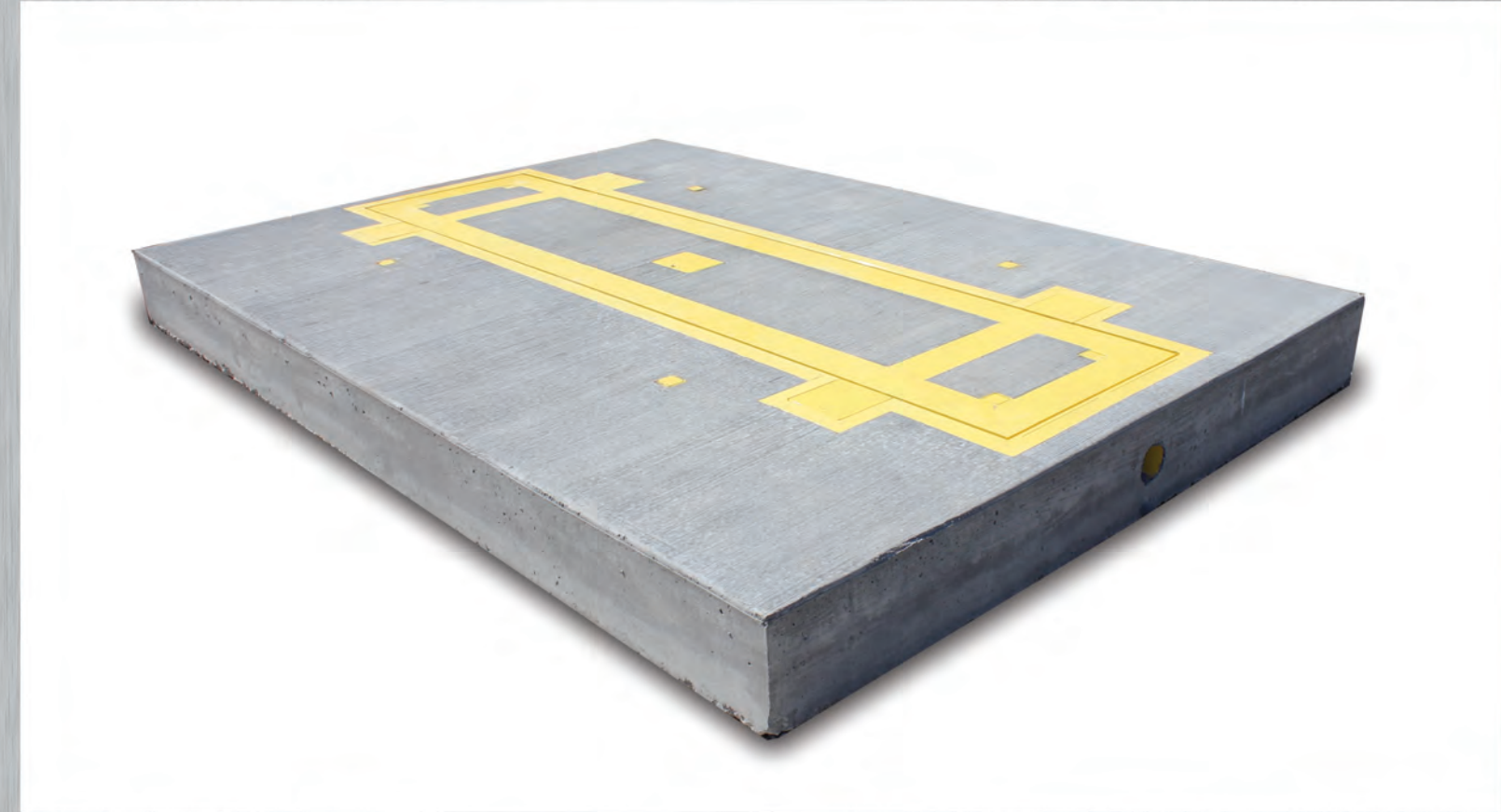
- Patent pending
- Save time and money
- Weather resistant enclosure
- Automatic print: Time/Date, Truck ID, Axle weights, and Gross, Net, Tare weights
- 250 Truck ID's with totals

Options

- Indoor controller/printer with outside traffic lights
- 5 inch remote display with super bright LEDs
- Remote Truck ID key-fob so you don't have to leave the cab
- Two scale bidirectional dump station system
- Software to monitor trucks, farms, fields, commodities, moisture and weight. Cloud and Android based.

Warranty: One year on printer, two years on controller, 5 years on load cells and precast concrete.

*In-Motion Axle Scales are not NTEP certified as Legal-For-Trade



IN MOTION AXLE SCALE

AXLE SCALE



B-TEK Distributor



CUTTING-EDGE TECHNOLOGY

Over 95 years of combined manufacturing experience

IN-MOTION AXLE SCALE

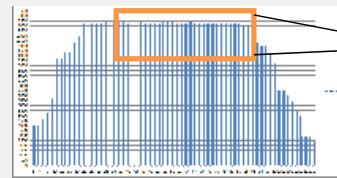
Operation: Drive over the scale while moving a constant 2-3 mph. The scale will automatically weigh each axle and print a receipt with individual axle weights and the total. If you store the truck's ID and tare weight, or use 2 pass weighing, the controller will calculate the gross, tare and net values.

- Monitor yields
- Document insurance weights
- Verify tonnage before you go to local elevator

Easy: Just install, add power, zero the scale and start weighing. The In-Motion Axle Scale is preconfigured for easy installation. The load cells are factory calibrated and the indicator is preprogrammed. All wiring uses watertight M12 connectors.

Accurate: On average better than $\pm 0.05\%$ repeatability can be expected. Company testing as well as extensive field trials have shown that with extended flat and level concrete approaches $\pm 0.02\%$ or better accuracy can be achieved. Individual results may vary. Well maintained vehicles weigh the best.

Economical: About 1/3 of the cost of a full length truck scale. With the In-Motion Axle Scale you will always know the total vehicle weight and the individual axle weights. Never worry about being overloaded again.



Weighing samples are captured at 100 times per second and then averaged within the offset window

Innovative: This patented design produces fast accurate weights without stopping on the scale or interrupting the flow of traffic.

OPERATION

Single Pass Weighing with Known Tare Weight



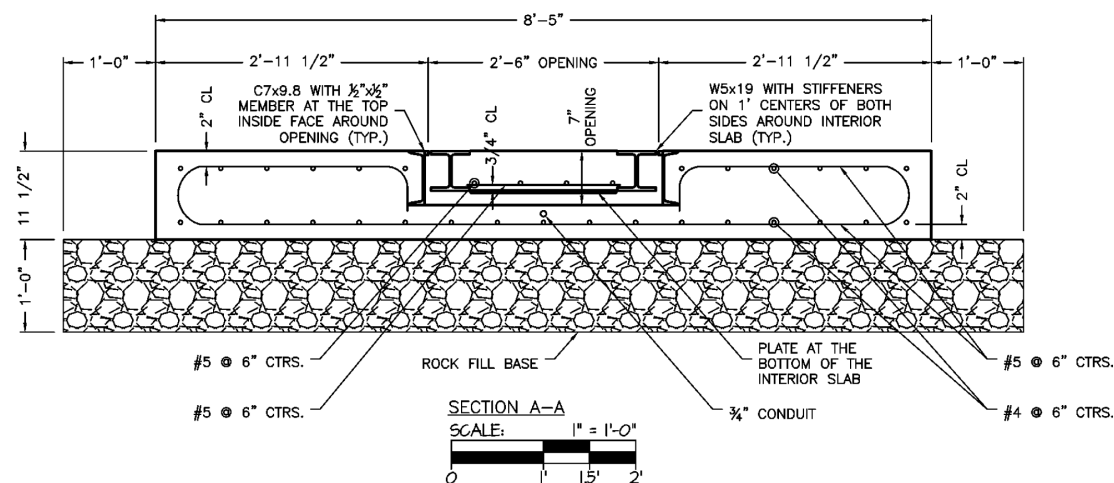
Press the TRUCK Key
Enter your known Tare Weight
Drive over the scale
or
Press the TRUCK Key
Enter the Truck ID to recall a stored Tare weight
Drive over the scale

Two Pass Weighing - Weigh In and Weigh Out



Inbound
Press the TRUCK Key then OK
Drive over the scale
Outbound
Use Up/Down arrows to select your Truck ID then OK
Drive over the scale

PLATFORM CROSS SECTION



TECHNICAL SPECIFICATIONS

Capacity	40,000 lbs (20t) per axle
Display Resolution	20 lbs (10kg)
Operating Speeds	Structurally certified for "in road use" at 40 mph up to 50,000 lbs (22.7t) Recommended speed 2-3 mph Speed error above 7 mph
Static Overload	150% on 80,000 lbs load cells = 120,000 lbs safe overload (60t)

Scale

Precast Scale Module	Dimensions: 8.5 x 12 x 11.5' Weight: 16,000 lbs (7.3t)
Scale Insert	Dimensions: 2.5' x 11' x 5" Weight: 1,500 lbs (0.7t)
Load Cell Assembly	Outbound, in-tension cradle assembly, self-contained
Load Cells	4 x 20,000 lbs (10t) folded shear beam load cells Stainless steel, hermetically sealed, IP68 ingress protection, M12 watertight connectors

Electronics

Zero Cancellation	+/- 2.0mV/V
Span Adjustment	0.1mV/V to 3.0mV/V
A/D Type	24bit Sigma Delta with $\pm 8,388,608$ internal counts
Operating Environment	Temperature: ambient 5 degrees Fahrenheit to 140 degrees Fahrenheit Humidity: <90% non-condensing
Display	LCD with two alphanumeric displays areas and LED backlighting: Primary display for axle weights: 6 x 1.12" high digits Secondary display for previous total weight: 9 x 0.7" high digits
Calibration	Factory calibration of load cells and indicator/controller Dynamic scaling factor to compensate for sloped driveways. (Only use in one direction)
Serial Outputs	Serial 1A: RS-232 serial port for remote display, network or printer supports. Serial 1B: RS485 transmit only for remote display
Battery Backed Clock Calendar	Battery life 10 years minimum
Additional Communications*	Module: RS232/RS232 Module: RS232/RS485 Module: RS485/RS485
Data Storage Device*	1
Ethernet TCP/IP*	1

Site Requirements

Approach - Customer Provided	Minimum 80' "flat and level" approach on either side of the scale recommended. A poured concrete approach to the scale is NOT required but will improve accuracy. Minimum 10' poured concrete approach is recommended
Foundation- Customer Provided	12" bed of CA-6 structural fill (crushed stone)

*Optional modules requiring additional configuration

**Specifications subject to change without notice.